



# INFRASTRUCTURE IN NEWS



## Chinese delegation visits Padubidri SEZ

**MANGALORE:** A top-level government and business delegation from China visited Padubidri SEZ. Synefra Engineering & Construction, the Integrated Infrastructure Solutions provider, welcomed the delegates at Padubidri SEZ.

According to a press release, the 12 member team from the China National Energy Administration, China Guangdong Nuclear Power, HYDROCHINA Corporation and CREIA arrived at Mangalore for a one day visit to the SEZ as part of their visit to India for Indo-China business co-operation.

Synefra, which has devel-

oped around 1,400 acres of SEZs in three different States with an investment of approximately \$200 million, showcased the infrastructure and facilities of their Padubidri SEZ to the officials from China, which has been fully operational for the past three years. The Padubidri SEZ area is spread across 670 acres approximately and caters to a range of industries including engineering, logistics, warehousing, foundry and other associated industries.

The SEZ currently provides direct employment of about 1,200 people of Udupi and Dakshina Kannada districts and an

outsourced employment to another 1,000 families.

During the visit, the delegation led by Lui Qui, Vice Minister met Synefra's senior management team, discussed a number of issues including the role of SEZ in regions such as Padubidri and how they propel the growth of the area. Sanjeev Nakhasi, Vice-President (Operations) gave a presentation on opportunities in and challenges faced by SEZ. The dignitaries were later escorted on a tour of SEZ, where explanations were given on various facilities provided by Synefra to unit holders.  
**DH News Service**

*Deccan Herald, Mangalore*

## Synefra expecting more investments in Coimbatore

Special Correspondent

**COIMBATORE:** Synefra Engineering and Construction, an integrated infrastructure solution providing company that was formerly known as Suzlon Infrastructure, expects total investment of about Rs. 5,000 crore at the Special Economic Zone (SEZ) developed by it here for high technology engineering and allied industries.

Its Corporate Vice-President (Operations) Sanjeev Nakhasi told *The Hindu* on Thursday that the 380-acre SEZ at Karumathampatty, near here, had leased out al-

• Synefra has developed 1,400 acres in Tamil Nadu, Karnataka and Gujarat

• Port development will be another area of focus, especially in the South

most 150 acres to the end users. The companies had invested nearly Rs. 2,100 crore at their factories at the SEZ. Suzlon and its associated industries were the anchor clients at the SEZ. Synefra was in talks with two more foundries to start operations at the facility. One acre to 30 acre plots would be offered to interested industries to set up shop at the SEZ, which had a

230 KV sub-station.

The companies that were already operating out of the SEZ registered exports of about Rs. 3,500 crore during 2009-10. In another three years, close to 80 per cent of space would be occupied and investments at production facilities would be about Rs. 5,000 crore.

Synefra had developed 1,400 acres of SEZs in Tamil

Nadu, Karnataka and Gujarat for hi-tech engineering and allied services. It had invested totally about \$ 200 million (approximately Rs. 900 crore) at the three SEZs. Another \$ 25 to 30 million would be invested on common infrastructure. Synefra might come up with two more SEZs. Port development would be another area of focus, especially in the South. "Ports are going to be the business of the future as they are gateway for exports and imports. Going forward, in the next three to five years, we are looking at ports as a significant driver of business," he said.

*The Hindu, Coimbatore*

## National Energy China Delegation visits Synefra's Padubidri SEZ

Pune(Voice News Service):- Leading Integrated Infrastructure Solutions' provider, Synefra Engineering & Construction Ltd today welcomed a top level govt. and business delegation from China at its Padubidri SEZ. A 12 member team from the China National Energy Administration, China Guangdong Nuclear Power, HYDROCHINA Corporation and CREIA arrived at Mangalore for a one day visit to the SEZ as part of their visit to India for Indo-China business cooperation. During the visit, the delegation led by Mr. Lui Qui, Vice Minister met the members of Synefra's senior management team, discussed a number of issues including the role of SEZ in regions such as Padubidri and how they propel the growth of the area. Padubidri's proximity to the New Mangalore Port was an added advantage he remarked. Mr. Sanjeev Nakhasi, VP, Operations gave a presentation on the opportunities and challenges since the SEZ's inception and later the dignitaries were escorted on an SEZ tour, where detailed explanations were given of the various facilities provided by Synefra to its unit holders.

Mr. JR Tanti, Managing Director, Synefra E & C remarked "The Karnataka Industrial Area Development Board and District administration have been very supportive and helped us tremendously for smooth land acquisition, rehabilitation and resettlement process as well as promoting the SEZ for regional.

*Power of Voice, Pune*

## China delegation visits Synefra project

Leading integrated infrastructure solutions' provider, Synefra Engineering & Construction welcomed a top level government and business delegation from China at its Padubidri SEZ recently. The 12 member team from the China National Energy Administration, China Guangdong Nuclear Power, HYDROCHINA Corporation and CREIA arrived at Mangalore for a one day visit to the SEZ as part of their visit to India for Indo-China business cooperation.

Synefra, which has developed around 1,400 acres of SEZs in three different States with an investment of approx USD 200 million, showcased the infrastructure and facilities of their Padubidri SEZ to the officials from China, which is fully operational for the last 3 years. The Padubidri SEZ area is spread across 670 acres approx. and caters to a range of industries including engineering, logistics, warehousing, foundry and other associated industries. This SEZ currently provides direct employment of about 1200 people of Udupi and Dakshina Kannada District and an outsourced employment to another 1000 families.

During the visit, the delegation led by Lui Qui, Vice Minister met the members of Synefra's senior management team, discussed a number of issues including the role of SEZ in regions such as Padubidri and how they propel the growth of the area. Padubidri's proximity to the New Mangalore Port was an added advantage he remarked. Sanjeev Nakhasi, VP, operations gave a presentation on the opportunities and challenges since the SEZ's inception and later the dignitaries were escorted on an SEZ tour, where detailed explanations were given of the various facilities,

*Sakal Times, Pune*

## सिनेफ्रा व्हायब्रन्ट गुजरातच्या महत्त्वपूर्ण संपादणुकीवर लक्ष केंद्रित करणार

पुणे : एकत्रित पायाभूत संरचनेचे उपाय देऊ करण्यात असलेल्या टान्टी ग्रुप कंपनीच्या सिनेफ्रा इंजिनियरिंग अँड कन्स्ट्रक्शन लि. राज्यात पायाभूत संरचनेचे उत्कृष्ट विकास साधण्यासाठी गुजरात सरकारबरोबर भागिदारी करण्याची इच्छा प्रकट केली आहे.

पत्रकार परिषदेला संबोधून कंपनीने गुजरातमधील व्यवसाय विस्ताराची योजना आणि आधारत्मक पायाभूत संरचनेच्या कार्यक्रमांमध्ये त्यांचा प्रवेश या विषयी घोषणा केली. कंपनीने त्यांचा वडोदराजवळील विशेष आर्थिक क्षेत्रामध्ये आणखी दोन युनिट धारकांच्या आगमनाविषयीही सांगितले.

इंजिन थंड करण्याच्या उच्च दर्जात्मक घटकांचा पुरवठा करणारी ऑटोमोटिव्ह उद्योगाचे इंजिन सील करणारी गॅसकेटस् कंपनी बॅन्सो प्रोडक्टस् इंडिया लिमिटेड (बीपीआयएल) आणि धातूच्या अल्ट्रा प्युरिफेशन उद्योगामधील पेरसंग ओ.एम.मेटल्स.प्रायव्हेट लि. या आता वागोडिया येथील सिनेफ्राच्या आर्थिक क्षेत्राचा

कार्यभार सांभाळतील.

या प्रसंगी बोलताना संजय नखासी, कॉर्पोरेट उपाध्यक्ष-प्रशासन, सिनेफ्रा ईअॅन्डसी म्हणाले, सिनेफ्रा टीमतर्फे आम्ही बॅन्सो व पेरसंग या कंपनीचे स्वागत करतो आणि भविष्यकाळात अशाप्रकारच्या आणखी गुंतवणुकीची आम्ही आशा करतो. राज्याला पायाभूत संरचना व सुविधांचे सामर्थ्य देऊ करणाऱ्या संधीकरिता गुजरात व्हायब्रन्ट गुजरात संमेलनात सहभाग घेणारे सिनेफ्रा ईअॅन्डसीचे व्यवस्थापकीय संचालक जेआर कांती म्हणाले, आमची मुळे गुजरातमध्ये रुतलेली आहेत आणि या क्षेत्रातून प्रचंड प्रतिसाद मिळाल्याने आम्ही फार प्रोत्साहित झालो आहोत.

राज्यात यापुढे वैश्विक दर्जाचे पायाभूत संरचना प्रकल्प व औद्योगिक क्षेत्रांच्या उभारणीसाठी पाठिंबा देण्याची आणि आमच्या संबंधांना अधिक दृढ करण्याची आमची इच्छा आहे. दशकापेक्षा जास्त काळापासून आता सिनेफ्रा आधारात्मक पायाभूत संरचनेच्या विकासासाठी वचनबद्ध आहे. आणि आमच्या वैश्विक अनुभवाद्वारे गुजरातच्या दृश्यात्मक आम्ही मूल्यात्मक वाढ नक्कीच करू.

Pune Metro, Pune

## सिनेफ्रा औद्योगिक पार्क शुरु

वडोदरा. अग्रणी इंटीग्रेटेड इन्फ्रास्ट्रक्चर सॉल्युशन प्रोवाइडर सिनेफ्रा इंजीनियरिंग एण्ड कन्स्ट्रक्शन लिमिटेड ने बुधवार को यहां सिनेफ्रा हाइटेक इंडस्ट्रियल पार्क का औपचारिक रूप से शुभारंभ किया। कम्पनी के उपाध्यक्ष (परिचालन) संजीव नखाशी ने बताया कि यह सेज के फ्रीचर्स विश्व के अन्य औद्योगिक सेज को ध्यान में रख कर विकसित किए गए हैं। यह पार्क यहां की इकाइयों के लिए विकास का उद्दीपक बनेगा। कम्पनी के अधिकारी इश्वारा राव ने कहा कि देश में सबसे तेजी से विकसित हुए सेज में शामिल वडोदरा सेज ने पर्यावरण के मामले में जागरूकता के साथ विकसित किया यह औद्योगिक पारंपर है। सिनेफ्रा ने देश में 1500 एकड़ जमीन में करीब बीस करोड़ डॉलर के खर्च से तीन सेज विकसित किए हैं। वडोदरा सेज 390 एकड़ क्षेत्र में फैला है।

Rajsthan Patrika,  
 Ahmedabad

## સિન્ફા મોટા પાયે સુસંકલિત ઇન્ફ્રાસ્ટ્રક્ચર પ્રોગ્રામ્સ હાથ ધરશે

અમદાવાદ : અગાઉ સુઝલોન ઇન્ફ્રાસ્ટ્રક્ચર લિમિટેડ તરીકે જાણીતી સિન્ફા ઇ એન્ડ સી લિમિટેડ (તંતી ગ્રુપની કંપની) જેની સ્થાપના વર્ષ ૧૯૯૮માં વૈશ્વિક સ્તરે ઔદ્યોગિક ઇન્ફ્રાસ્ટ્રક્ચરનો અભિગમ, મુદ્દીરોકાણ અને વિકાસ માટે કરવામાં આવી હતી. કંપનીના મેનેજિંગ ડિરેક્ટર જે.આર. તંતીએ સ્થાપેલી સ્વતંત્ર સંસ્થા સિન્ફા એન્જિનિયરીંગ એન્ડ કન્સ્ટ્રક્શન લિ. એક હાથકા કરતાં વધુ સમયમાં વૈશ્વિક સ્તરે ૧૦૦થી વધુ પ્રોજેક્ટ હાથ ધરી ચૂકી છે. સિન્ફા એ કન્સ્ટ્રક્શન માંડીને એન્ડટુએન્ડ ઇન્ફ્રાસ્ટ્રક્ચર સોલ્યુશન્સ પૂરાં પાડવાની ક્ષમતા પ્રાપ્ત કરી છે અને તુરંત ઉપયોગમાં લઈ શકાય તેવી વિશ્વસ્તરની સુવિધાઓ સ્થાપી છે. તેના બિઝનેસમાં પ્રોજેક્ટ મેનેજમેન્ટ સર્વિસીસ, ઇસીપી અને ફેસિલીટી મેનેજમેન્ટ સર્વિસીસ અને ખાસ કરીને સસ્ટેનેબીલીટી સર્વિસીસમાં નિપુણતા અને ડિઝાઇન મેનેજમેન્ટનો સમાવેશ થાય છે.

કાર્યક્રમો હાથ ધરી રહ્યા છે અને ભારતમાં ગ્રીન તેમજ સસ્ટેનેબલ મુવમેન્ટ ચલાવી રહ્યા છે. તેમના નેતૃત્વ હેઠળ ઇન્ફાએ ત્રણ ઇન્ડસ્ટ્રીયલ એસઇડેડની સ્થાપના કરી છે જેમાં તામિલનાડુ, ગુજરાત અને કર્ણાટક દરેકમાં એસઇડેડનો સમાવેશ થાય છે. તેમની સિદ્ધિઓમાં વધુ એક સિદ્ધિનો ઉમેરો સુઝલોન વન અર્થ નામના સુઝલોનના ગ્લોબલ હેડ ક્વાર્ટરથી થયો છે જે વિશ્વનું ગ્રીનેસ્ટ કોર્પોરેટ કેમ્પસ ગણાય છે અને લીડ (LEED) ઇન્ડિયા પ્લેટીનમ અને ગ્રીહા (GRIHA) ફાઇવસ્ટાર ગ્રીન બિલ્ડીંગ સર્ટીફિકેશન ધરાવે છે. આ દ્વારા ઇન્ફ્રાસ્ટ્રક્ચર ઉદ્યોગમાં અદ્યતન આર્ટ સ્ટ્રક્ચરના નિર્માણમાં એક મહત્વનું સિમાચિહ્ન ઉમેરાયું છે.

તંતીના નેતૃત્વ હેઠળ સિન્ફાએ જે વિવિધ પ્રોગ્રામ હાથ ધર્યા છે અને વિકસાવ્યા છે તેમાં 'સસ્ટેનેબીલીટી એન્ડ રિસ્પોન્સીબીલીટી', 'ન્યુ એન્ડ રિલેવન્ટ ટેકનોલોજી' અને 'બિઝનેસ એકસેલન્સ'નો સમાવેશ થાય છે.

છેલ્લા ૨૨ વર્ષથી તંતી મોટાપાયે ઔદ્યોગિક

Phulchaab, Ahmedadab

વડોદરા સમાચાર રવિવાર તા. ૨૬-૦૯-૨૦૧૦ પાન નં. ૨

## કંપની સમાચાર વડોદરામાં સિનેફા હાઇટેક ઇન્ડસ્ટ્રીયલ પાર્કનું અનાવરણ

અગાળી ઇન્ડીકોર્પોરેટ ઇન્ફ્રાસ્ટ્રક્ચર સોલ્યુશન પ્રોવાઇડર સિન્ફા એન્જિનિયરીંગ એન્ડ કન્સ્ટ્રક્શન લિમિટેડે પશ્ચિમ ભારતમાં બેની ખૂબ આનુરતાપૂર્વક રાહ બોવાતી હતી તે પ્રોજેક્ટ આજે ઔપચારિકપૂર્વક ખુલ્લો મુકાયો છે. કંપનીએ વડોદરા ખાતેનું આ સ્પેશ્યલ ઇકોનોમિક ઝોન સંપૂર્ણપણે કાર્યરત હોવાની જાહેરાત કરી હતી. ભારતમાં સૌથી વધુ ઝડપથી વિકસાવાયેલા સ્પેશ્યલ ઇકોનોમિક ઝોનમાં ગણના પામતું વડોદરા સેઝ એ પર્યાવરણ બાબતે સલામત સાથે વિકસાવાયેલ ઔદ્યોગિક સંકુલ છે. સિન્ફા એ ૧૫૦૦ એકર જમીનમાં અંદાજે રૂ. ૨૦ કરોડ મુએસ ડોલરના ખર્ચે ત્રણ સ્પેશ્યલ ઇકોનોમિક ઝોન વિકસાવ્યા છે. વડોદરા સ્પેશ્યલ ઇકોનોમિક ઝોન આજે ૩૯૦ એકર વિસ્તારમાં પરચાયેલું છે. તે ઓટો એન્સીલરીઝ, હાઇટેક એન્જિનિયરીંગ, આઈટી અને આઈટીઇએસ, લોજિસ્ટિક્સ વેરહાઉસિંગ, લેમ્પ એન્ડ જ્વેલરી, ફૂડ પ્રોસેસિંગ, બાયોટેકનોલોજી, ટેક્સટાઇલ્સ અને અન્ય પર્યાવરણલક્ષી ઉદ્યોગોની જરૂરિયાત પૂર્ણ કરશે. આ સ્પેશ્યલ ઇકોનોમિક ઝોનને હાઇટેક એન્જિનિયરીંગ પ્રોડક્ટ્સ અને સર્વિસીસ માટે માન્યતા મળી છે. નેશનલ હાઇવે -૮ થી ૭ કી.મીના વ્યૂહાત્મક સ્થળે આવેલો આ ઇન્ડસ્ટ્રીયલ પાર્ક વડોદરા રેલવે સ્ટેશનથી માંડ ૧૫ કી.મી દૂર છે. જ્યારે અખાવાદ ઇન્ટરનેશનલ એરપોર્ટ અહીંથી ૩૦ કી.મી દૂર આવેલું છે. આ સ્થળ તમામ મુખ્ય શહેરો સાથે સરળ સંપર્ક પૂરો પાડે છે. છેલ્લા બે વર્ષથી સંપૂર્ણપણે કાર્યરત થયેલા આ સ્પેશ્યલ ઇકોનોમિક ઝોનને ખુલ્લું મુકતાં સિન્ફા ઇન્વેસ્ટ્મન્ટ વાઇસ પ્રેસિડેન્ટ ઓપરેશન્સ સંકુલ નખાણીએ જણાવ્યું હતું કે, અમે તમામ ભાવિ રોકાણકારોને અહીં આવકારતાં આનંદ અનુભવીએ છીએ. દેશના પશ્ચિમ ભાગમાં વિવિધ પ્રકારના એન્જિનિયરીંગ ઇન્વેસ્ટ્મન્ટ્સ ખૂબ વિકસ્યા છે. આ સ્પેશ્યલ ઇકોનોમિક ઝોનના ફીચર્સ વિશ્વનાં અન્ય ઔદ્યોગિક સ્પેશ્યલ ઇકોનોમિક ઝોનને ધ્યાનમાં રાખીને વિકસાવાયા છે. આ પાર્ક નિર્વિવાદપણે અહીંના તમામ એકમો માટે વિકાસનું ઉદ્દેશ્ય બની રહેશે.

Vadodara Samachar, Ahmedabad

## பொறியியல் சிறப்புப் பொருளாதார மண்டலம்

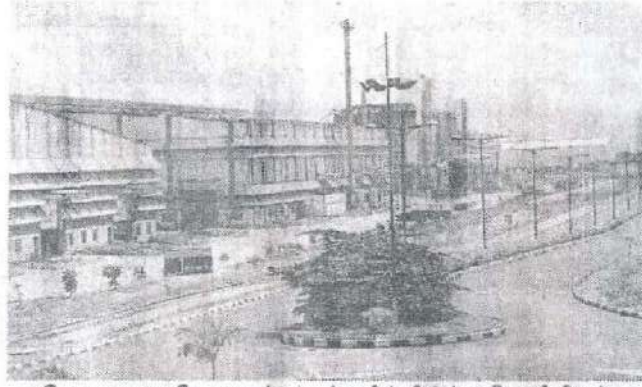
கோவை கருமத்தம்பட்டியில்  
 380 ஏக்கரில் துவக்கம்

கோவை, செப். 30: கோவை அருகே கருமத்தம்பட்டியில் சின்ப்ரா பொறியியல் மற்றும் கட்டுமான நிறுவனம் சார்பில் 380 ஏக்கரில் பொறியியல் சிறப்புப் பொருளாதார மண்டலம் துவக்கப்பட்டுள்ளது.

சின்ப்ரா பொறியியல் மற்றும் கட்டுமான நிறுவன உதவித் தலைவர் சஞ்சீவ் நகாசி கூறியது:

கல்லான் நிறுவனத்தின் அங்கமாக சின்ப்ரா நிறுவனம் விளங்குகிறது. இதன் கீழ் வடகோதாராமங்களுர் மற்றும் கோவையில் ₹ 850 கோடி முதலீட்டில் பொறியியல் சிறப்புப் பொருளாதார மண்டலங்கள் துவக்கப்பட்டுள்ளது.

அமெரிக்கா, சீனா மற்றும் ஐரோப்பிய நாடுகளில் சிறப்புத் திட்டங்கள் செயல்படுகின்றன.



கோவை அருகே கருமத்தம்பட்டியில் சின்ப்ரா பொறியியல் மற்றும் கட்டுமான நிறுவனம் சார்பில் 380 ஏக்கரில் துவக்கப்பட்டுள்ள பொறியியல் சிறப்புப் பொருளாதார மண்டலம்.

கோவை கருமத்தம்பட்டியில் 380 ஏக்கரில் பொறியியல் சிறப்புப் பொருளாதார மண்டலம் துவக்கப்பட்டுள்ளது.

வாகன உதிர்ப்பாகங்கள் மீத பொறியியல் உற்பத்திப் பொருட்

கள், தளவாடங்கள், வார்ப்படங்கள் போன்ற உற்பத்திப் பொருள் தயாரிப்பு நிறுவனங்கள் இந்த சிறப்புப் பொருளாதார மண்டலத்தில் இடம்பெறும்.

தற்போது ஒப்பந்த அடிப்படையில் அமைந்துள்ள 3 நிறுவனங்கள் உற்பத்தியை துவக்கி உள்ளன. இங்கு தொழில் நிறுவனங்கள் உடனடியாக உற்பத்தியை துவக்கும் வகையில் கட்டமைப்பு வசதிகள் உள்ளன. 100 மெகாவாட் திறன் கொண்ட துணை மின் நிலையம் உள்ளது.

கருமத்தம்பட்டி பொறியியல் சிறப்புப் பொருளாதார மண்டலம் ₹ 2100 மதிப்பிலான முதலீடுகளை சுர்த்துள்ளது. 3 ஆயிரம் வேலை வாய்ப்புகளை உருவாக்கியுள்ளது.

மேலும் 3 நிறுவனங்களுடன் பேச்சு வார்த்தை நடக்கிறது. போதுமான நிறுவனங்கள் இடம் பெற்று முழுமையாக உற்பத்தித் துவங்கியதும் 6 முதல் 7 வருடங்களில் ₹ 7 ஆயிரம் கோடி மதிப்பிலான உற்பத்திப் பொருட்கள் ஏற்றுமதியாகும் என்றார் சஞ்சீவ் நகாசி.

சின்ப்ரா நிறுவனத்தின் சேவைப் பிரிவு பொது மேலாளர் என். சஸ்வந்திராவு் உடவிருந்தார்.

Dinamani, Coimbatore

## Synefra Unveils its Hi-Teach Industrial Park at Vadodara

Pune (My Pune Express News Service) : Leading Integrated Infrastructure Solutions' provider Synefra Engineering & Construction Ltd today unveiled their most sought-after project in Western India as they formally announced the launch of their fully functional Special Economic Zone at Vadodara. Recognized as one of the fastest developed SEZs in India, Vadodara SEZ is an eco-consciously developed one stop industrial solution. Synefra has developed 3

SEZ's over 1500 acres of land with an investment of approx USD 200 million. The Vadodara SEZ area is approx 390 acres. It will cater to a range of industries including auto ancillaries, light engineering, IT and ITES, logistics warehousing, gems and jewellery, food processing, biotechnology, textiles and other environment friendly industries. This Special Economic Zone has been approved for employing hi-tech engineering products and services.

*My Pune Express, Pune*

## Vadodara SEZ to attract Rs 5K cr investment, generate 10K jobs

TIMES NEWS NETWORK

**Vadodara:** Synefra Engineering and Construction (E&C) Limited, formerly known as Suzlon Infrastructure Limited is expecting investment worth Rs 5,000 crore in the next three years at the Vadodara special economic zone (SEZ), which it has developed at Waghodliya.

Synefra E&C's vice-president (operations) Sanjeev Nakhasi said this on Wednesday adding that the Vadodara SEZ has been developed for hi-tech engineering products and services and is expected to generate direct employment of 10,000.

The three SEZs including Coimbatore, Mangalore apart from Vadodara developed by the Tanti group company with an investment of around Rs 800 crore presently has 55 percent occupancy.

"We are hoping that the occupancy in these SEZs will reach 75 percent in next three years," said Nakhasi, adding that while two units are already operational at Vadodara SEZ, the company is in advanced talks with six unit holders.

At present, SE Forge Limited - which has set up

Asia's largest forging plant with an investment of around Rs 568 crore and manufacturing capacity of 1.20 lakh tonnes per annum is the largest operational unit at the SEZ while a city-based company Cryogas Equipment Private Limited is also setting up a unit.

Jewel Consumer Care Private Limited promoted by city's prominent industrialists Amit and Geeta Goradia has also signed an agreement to set up a unit at the SEZ.

"Discussions with others are on advanced stage," said Nakhasi, adding that last year exports from Vadodara SEZ were worth Rs 500 crore. They want these numbers to rise.

The industrial park spread on around 390 acres land is being promoted as the only SEZ in the country with uninterrupted operational gas supply for which the developers have signed an agreement with Gujarat State Petroleum Corporation (GSPC).

The firm has also shown interest in the Delhi Mumbai Industrial Corridor (DMIC) project in which it envisages to develop industrial areas and parks coming along the corridor, primarily in states of Gujarat and Rajasthan.

*Times of India, Pune*

## Synefra to showcase achievements at Vibrant Gujarat



to invest for business growth. "Mr. JR Tanti, Managing Director, Synefra E&C who would be participating at Vibrant Gujarat forum has stated, "We have our roots from Gujarat and are encouraged by the tremendous response that we have received in this region. Going forward, we wish to set up world-class infrastructure projects and industrial parks in the state. For over a decade now, Synefra is committed to sustainable infrastructure development and with our global experience we can definitely add value to the vision of Gujarat."

**Pune(Voice News Service):-** Leading Integrated Infrastructure Solutions' provider Synefra Engineering & Construction Ltd – A Tanti Group Company, today expressed keen interest in partnering with the Gujarat Government to further develop state-of-art infrastructure in the state.

The opportunities that special focus events like Vibrant Gujarat provide are tremendously helpful to showcase the strength that this State has to offer in terms of infrastructure and facilities. Synefra SEZ is one such platform for engineering industries

"Such an event is an excellent campaign that aims to facilitate investment alliances for participating countries and corporates."

## Vadodara SEZ to see ₹7.5k crore inflows

Our Bureau  
 VADODARA

INTEGRATED infrastructure solution provider Synefra Engineering and Construction Ltd (formerly Suzlon Infrastructure Ltd) is expecting ₹5,000-7,500 crore of investments to flow into its Special Economic Zone (SEZ) at Vadodara in the next three years. Most of these investments are expected to come to Gujarat in the form of new units that will manufacture hi-tech engineering products.

The 'Vadodara SEZ', which is one of the three zones being developed by the firm (the other two being in Karnataka and Tamil Nadu), has already attracted investments of over ₹2,000 crore.

This includes a forging unit, set up by SE Forge Ltd which is stated to be the largest in Asia. The other upcoming unit belongs to a mid-sized firm, Cryogas Equipment Pvt Ltd. The investments so far have generated employment for 1,200 people.

The vice president Operation E&C (engineering & construction) of Synefra, Mr Sanjeev Nakhasi, told ET, "Vadodara SEZ has already signed a deal with one unit (Vadodara-based Jewel Consumer Care Pvt Ltd) and are in advance stages of talks with three more firms who are interested in setting up their units at our SEZ. We

hope to have six units running here in next 18 months, generating direct employment for 10,000 people." Citing non-disclosure agreement, Nakhasi said he will not name the units that were planning to set up their units.

Vadodara SEZ is aimed at catering to industries like auto ancillary, light engineering, IT, ITeS, logistic warehousing, gems and jewellery, food processing, biotechnology, textiles and other environment friendly units. It has a 66/33 kv power sub-station, zero waste system and GSPC supplied piped LNG network for SEZ occupants.

So far Synefra has invested nearly Rs 800 crore in all its three SEZs in Vadodara, Mangalore and Coimbatore.

The company has around 50% of vacant land at these SEZs put together and is likely to attract an investment of over ₹10,000-12,000 crore at the upcoming units. Till now the existing units at Synefra SEZs has generated exports of over ₹3,500 crore. The exports are targeted to reach over ₹20,000 crore.

Synefra is also pursuing its goal to emerge as niche player for verticals like project management consultant (PMC), engineering, procurement and construction (EPC) and infrastructure facility management service (IFMS).

*Economic Times, Pune*

*Power of Voice, Pune*



# Synefra launches SEZ in Vadodara

The firm has developed 3 SEZs so far

**Nilanjana Ghosh Choudhary**

Pune-based integrated infrastructure solutions' provider, Synefra Engineering and Construction (E&C) Limited, launched their fully functional special economic zone (SEZ) in Vadodara, Gujarat, on Thursday. The SEZ is an eco-consciously developed one-stop industrial destination and is recognised as one of the fastest developed SEZs in the country.

Synefra EC, a Tanti Group Company, formerly known as Suzlon Infrastructure Limited, was set up in 1998 with a focus to conceptualise, invest, develop and maintain hi-tech industrial infrastructure globally for the Suzlon Group.

Synefra has so far developed three SEZs over 1,500 acres with an investment of around \$200 million. The Vadodara SEZ area is about 390 acres. It will cater to a range of industries, including

**We are confident that our Vadodara SEZ will be well received by investors**

**JR Tanti**  
 MD of Synefra E&C

auto ancillaries, light engineering, IT and ITES, logistics warehousing, gems and jewellery, food processing, biotechnology, textiles and other environment-friendly industries.

"We are confident that our Vadodara SEZ will be well received by investors looking for a productive investment option as this is an eco-friendly and ready-to-use infrastructure notified for sector-specific engineering products and related services. It also has the advantage of connectivity and access," said JR Tanti, MD of Synefra E&C.

## Synefra's Hi-Tech Industrial Park

Integrated Infrastructure Solutions' provider Synefra Engineering & Construction Ltd announced the launch of its fully functional Special Economic Zone at Vadodara which is expected to be an eco-consciously developed one stop industrial solution. The Vadodara SEZ has an approximate area of 390 acres and will cater to a range of industries including auto ancillaries, light engineering, IT and ITES, logistics warehousing, gems and jewellery, food processing, biotechnology, textiles and other environment friendly industries.

This is the only SEZ in India with uninterrupted operational gas supply, 20mt wide expandable internal roads and drains, reliable power supply 66 / 33 KV substation, dedicated water supply from Sardar Sarovar Narmada Nigam, extensive water management systems like rain water harvesting and ground water re-charging,



**BUILDOTECH**

October 10

DNA, Pune

# “SEZs have generated 6 lakh jobs over the past 5 years”

...says Sanjeev Nakhasi - Corporate VP Operations, Synefra E&C

Recently there have been reports in the media that SEZs are nothing but an indirect instrument for acquiring land. Are SEZs in India efficient enough to pump up Indian exports? What is the truth?

No, this is a wrong perception. SEZs have been export growth boosters. It's a trade capacity development tool, with the goal to promote rapid economic growth by using low cost labour base, developed infrastructure and business incentives to attract foreign investment and technology.

The recently concluded financial year has recorded the total export figures from the SEZs in the country at around Rs 3,00,000 cr. (Source: www.dnaindia.com/india/report\_exports) compared to last fiscal's performance of Rs 2,20,711.39 cr. (Source: www.sezindia.nic.in)

What are the different clauses in the Direct tax code that are directly affecting SEZ developers?

Introduction and imposition of Minimum Alternate Tax (MAT) and Dividend Distribution Tax (DDT) may affect SEZ developers.

What are the hurdles and challenges for an SEZ developer in India?

Land acquisition is a major hurdle along with the government promoted projects.

How, according to you, will SEZs grow in the years to come? SEZs have marked a robust growth over a period of last five years and have been



the major contributor to the Indian GDP. Any statutory or Govt. policy should not dampen the spirit and the growth. In a span of 5 years there is a tremendous growth in exports by approximately 866 per cent. SEZs have generated more than 6 lakh jobs in the country over the last 5 years. Investments have surged by approximately 5,800 per cent to Rs 176,146 cr since the commencement of the SEZ act. (Source: www.sezindia.nic.in)

As a representative of the industry, what are your recommendations of incentives for an SEZ developer in India?

The first recommendation is the roll back of the imposition of the MAT and DDT.

Based on the growth of the export from SEZ, the establishment of the SEZs has helped to increase the volume of international trade. Further, a large amount of foreign investment has found its way not only into the export trade, but also into infrastructure construction and commerce. Foreign companies have been encouraged to establish their presence in the territories and the export industry has grown. Advanced foreign technology has been brought in with the inflow of foreign investment.

All these factors have contributed to the growth of the Indian economy and increased contribution to the GDP of the nation. And if we do not roll back these impositions it may hamper the growth.

relatively low, it would definitely lead to lower exemptions. The finance ministry proposes to implement the DTC by April 1 2012.

The industry says the regulation were never settled. There have been nine amendments to the SEZ rules since they were notified in February 2006 and 64 instructions brought out by the commerce department. The bill approved by the Cabinet may not be the last word on tax laws for SEZs as it may be opposed by various interest groups once it is presented to the Standing Committee of Parliament for discussions. SEZ developers may also take legal recourse against the provisions of the new tax code if they are adversely affected by it. The DTC Bill may violate the doctrine of promissory estoppel (which disallows governments from going back on promises made), as investments were made by developers based on certain tax relief promises made by the government, according to a senior

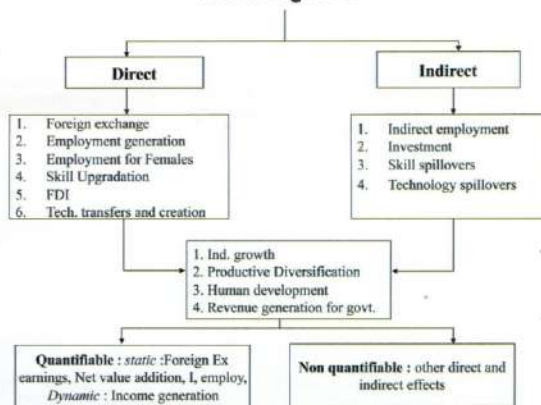
industry official.

Under the present regime, SEZ units get 100 per cent tax exemption on profits earned for the first five years, a 50 per cent exemption for the next five years and another 50 per cent exemption on re-invested profits in the following five years. SEZ developers, on the other hand, get 100 per cent tax exemption on profits for ten years, which they can choose in the block of the first fifteen years.

#### RECENT TRENDS

The entry of the private sector into SEZ development has changed the range of facilities, services, and amenities available within zones. Recent trends tied to the increase in private zone development include the development of SEZs and industrial estates on an integrated rather than stand-alone basis, increased specialisation of facilities catering to the unique needs of target industries (hi-tech, petrochem, software, among

### Advantage SEZ



18 | Special Report

Projects Info | 4 - 10 October | 2010

# “Vadodara SEZ - A paradise for diversified business”



■ The SE forge premises at the industrial park in Vadodara.

Synefra Engineering and Construction recently unveiled their most sought-after project in Western India - the Special Economic Zone at Vadodara. This industrial park will cater to a range of industries including auto ancillaries, light engineering, IT and ITES, logistics warehousing, gems and jewellery, food processing, biotechnology, textiles and other environment friendly industries. *Purva Khole* reports the specifics of this project.

**Project awarded:**

This project is owned by Synefra and being developed for potential investors setting base in Gujarat and in around this state.

**Location**

Synefra SEZ, Vadodara is a special economic zone approved for hi-tech engineering products and services and is located close to the territorial limits of Vadodara Urban Development Authority limits (VUDA) on SH 158 and is about 7 km from NH 8.

**Project finance:**

The project was financed by IDFC Bank. Out of the total project cost, 40 - 45 per cent is financed on debt basis and rest is financed by equity and Synefra's sources.

**Phase wise project cost and timeline**

Phase	Project Cost	Timeline
Expansion project for Munjal Auto at Waghodia	Rs 523 lakh	20 weeks
Project Management consultancy for green field project for Se Forge at SEZ	Rs 122 crore	12 months

**Project Execution:**

The project was divided into three parts for the execution:

**(I) Expansion project for Munjal Auto at Waghodia district in Vadodara**

Under this phase of project development, it included design, fabrication, supply and erection of the pre-engineered

building for the expansion of the project

**(II) Project Management Consultancy for Green field Project for Se Forge at SEZ**

This phase included the design, fabrication, supply and erection of the Pre-Engineered building for the expansion of the project along with complete utilities, site development, roads and drains and other ancillary units for administration, kitchen and stores.

**(III) Developer of Hi-Tech Engg SEZ at Waghodia**

This included the development of Hi-Tech Engg SEZ over 380 acre. A part of the total area is developed as non process area. The area has functional components necessary to ensure the smooth func-

tioning of the industrial park. Development of transportation hub with necessary support facilities and support, security towers and roads and drainage in the complex.

**Infrastructure at the industrial park:**

**Buildings:** Buildings such as pump houses, sub stations, fire station will be required for

operating/ maintaining various infrastructure services. Other buildings under consideration are - A commercial Complex,



“Land acquisition did prove to be a challenge. Apart from that, at Vadodara SEZ, the company has procured LNG (Gas pipeline) making this location one of its kind abode for units that require uninterrupted gas supply. Apart from gas supply this SEZ is supplying reliable power supply 66/33 KV substation, from Mis Gujarat Energy Transmission Co. Ltd. Waghodia and dedicated water supply from Sardar Sarovar Narmada Nigam”

Sanjeev Nakhasi, Corporate VP - Operations, Synefra E&C

a Warehouse, Canteen/ Guest House, etc. These facilities would supplement the functioning of Industrial Units located in the Process Zone and facilitate their working by providing support infrastructure like Bank, Courier services, etc.

**Road Network:** Black top roads with precast kerbs at edges, paved footpaths and separately defined corridors for underground utilities. Roads having right of way of 30 m, 24 m, and 18 m, specified.

**Storm Water Collection Network:** Combination of RCC hume pipes with catch pits at regular interval and rectangular drains with RCC precast covers - is proposed to collect rain water. Storm drains to run parallel to roads on one side!



■ Black top roads with precast kerbs at edges.

each side of the road, depending upon the situation. Space already allocated for these drains within the right of way proposed. Disposal of storm water will be in the natural drain/ canal running along the state highway, just outside the plot of the park.

**Water storage and treatment facilities:** Total demand of 2 MLD water assumed on the basis of data received so far. This includes industrial as well as domestic consumption. Considering that the raw water will be sourced from a canal/ government source, only primary treatment is considered to be done at the park. Overhead tank of 0.5 ML capacity is considered for supplying water to non process zone.

**Water distribution network:** A network of HDPE pipe lines laid below ground within the Service corridor is proposed for supplying water from under ground storage tanks to different areas of the Park. The supply of treated water from under ground storage tanks will be through a hydro-pneumatic pressurised feed system.

**Sewage collection network:** Sewage collection network having gravity flow is planned within the Service corridor. Domestic sewage from each of the individual unit and other common facilities will be collected through this network.

**Sewage treatment plant:** Treatment plant to handle 1.8 MLD domestic sewage is considered. Individual units will be restricted from discharging any industrial effluent to the common sewage collection network.

**Gas receiving station and gas distribution network:** Considering the requirement of individual unit holders, gas requirement is estimated at 15,000 cu m per day. Space has been allocated within the Service corridor for Gas distribution pipeline.

**Electrical system :** Anticipated Electrical Load for the total Industrial Park is 20 MVA. Gujarat Electricity Board (GEB) Incoming Power Supply is provided from Waghodia EHV Switch Yard at 66 KV Over head Line for the first phase of development.

GUEST ARTICLE



## Challenges faced by SEZ developers

**Sanjeev Nakhasi** outlines the various challenges faced by SEZ developers in the country today

SEZs are the growth engines of Indian exports and there is no iota of doubt about it. Finance Minister Pranab Mukherjee in his recent Budget speech stated categorically, "In first three quarters of 2009-10 exports from SEZs recorded a growth of 127 per cent over the corresponding period last year." This considering that overall export growth has practically stagnated. SEZs are and will remain the growth engines of the Indian exports. India introduced a variety of schemes; EPZ, EOU, STP, EHTP, EPCG, and FTZ over the years. These trade zones cannot be small and many. Consider, China. The Chinese SEZs are massive; China has only five SEZs. For example, Shenzhen has an area of about 2,000 sq km. Even after the execution of the SEZ Act of 2005, Indian SEZs are much

smaller. India has approximately 579 notified SEZs. Government of India has already taken a very positive step by implementing the Sunset Clause for the EOUs. This will lead the EOUs to consolidate with the SEZs and this is the need of the hour.

#### Land Acquisition

The Government should make the SEZ policy more in tune with business realities to foster economic growth. SEZs should have a "critical mass" in terms of size to synergise with infrastructure development and accelerate economic development in the region. The Govt policy should facilitate the development of massive SEZ projects and facilitate the infrastructure development around it. For SEZs to achieve synergies and stimulate the eco-



**GUEST ARTICLE**

conomic growth, they have to have economies of scale. Though, Synefra was able to perform this task by meticulous planning, in the current Indian scenario, it is next to impossible for a developer to amass large contiguous land parcels for SEZ development. Government intervention is required here to facilitate the land acquisition and make the SEZ scheme a complete success and the required engine of growth.

**GOVERNMENT POLICIES / REGULATIONS**

Unlike Western countries, the Indian Fixed Income Markets are not developed to support the huge capital requirements for these massive SEZs. The Government should facilitate the funding of these projects either through nationalised banks or infrastructure bonds. Furthermore, external commercial borrowing should be allowed and not just for infrastructure development.

The Government in its bid to make the SEZ scheme a success has provided many tax sops to incentivise the private sector to participate and make SEZs a success but this is just not enough. The SEZ Act of 2005, the Rules of 2006 and many Amendments still leave many issues unaddressed. Following are some of the critical issues and considering the current recession the Government should act fast discarding its guarded response and lethargy to most of the policy issues:

- Benefits to the ancillary industries to house themselves in SEZs
- Benefits to contractors to execute work contracts in SEZs
- Levability of VAT and stamp duty could be in domain of states
- VAT exemptions to co-developers

Furthermore the changing rules of the SEZ game (18 so far) have brought some amount of uncertainty to the private sector. The problem is further aggravated by the Direct Tax Code that puts the whole SEZ scheme in question by negating the fiscal benefits. Such policy uncertainty puts the decision question mark not just on the SEZ developers but also on the manufacturing units whom we wish to attract to accelerate our growth and make India a preferred manufacturing destination.

**PROJECT MANAGEMENT CONSULTANCY**

Due to the scalability of these projects and since India has just started such large size investment in SEZs, there is a need to invite globally experienced and technically high skilled professionals (Project Management Consultants or PMCs) to manage such complex projects who have already worked on such scalable complex projects on international standards.

Thus Project Management Consultancy plays a vital role by providing knowledge through concept planning, master planning,

GUEST ARTICLE



design & engineering, effective cost & quality solutions for development of such industrial infrastructure facilities. Engaging PMCs of international repute is the only way to mitigate the risks such as delays and cost escalation, that are inherent in these projects of international dimensions.

Synefra's Project Management Consultancy team has always comprised best industry experts with varied experience in the areas of project planning, project execution, project quality, HSE, contract management and so on. Our techno managers are PMP-certified. They ensure to deliver the project within cost, quality and time. We focus on building their capabilities & competencies by providing them various onsite and off-site training programmes such as training on ISO standards and practices, PMP programmes, technical training programmes and so on.

**SYNEFRA'S SEZs**

Synefra has completed developing 1,400 acres of three world-class SEZs in Coimbatore, Mangalore, and Vadodara in 2008. These SEZs are fully operational and have exported approximately Rs 3,000 crore worth of products.

- Our Coimbatore SEZ spans over 376 acres of land, the SEZ is within the territorial limits of Coimbatore on SH 165 and 1.5 km from NH-47. This SEZ has a 230 KV substation and 40,000 KVA of sanctioned load making it ideal for power-intensive industries. The water supply is secured by a captive dedicated 23 km water line from Tirupur. To our knowledge, this is not

available anywhere in India.

- The Mangalore SEZ is the only notified Special Economic Zone for hi-tech engineering products and services in Mangalore with a total area of 642 acres. This SEZ is 50 km from NMPT port and is ideal for heavy export industries that can optimise the supply chain by using NMPT port.
- The Vadodara SEZ is located close to the territorial limits of Vadodara Urban Development Authority limits (VUDA) on SH 158 and is seven km from NH 8. The SEZ has a dedicated gas pipeline and is an ideal abode for energy-intensive gas-based industries.

The process of setting up units in our SEZs is very simple. Our SEZs are "plug and play" i.e. as the SEZs are fully operational, the companies can simply walk in and start their production after the requisite SEZ approvals. Thus the cost of delayed production is minimal in our SEZs. We also specialise in SEZ-related Project Management Consultancy, Design and Engineering Services and Sustainable Solutions for SEZs. Many of our unit-holders have chosen to take these services from us as well and have further reduced their project completion time.

To provide world-class facility management and security services we have tied up with Sodexo, Knight Frank, SIS, and G4S. Thus our unit-holders focus on their core-competency - their business. We take care of the rest. ■

*(The writer is Vice President - Operations, Synefra Engineering & Construction Ltd.)*

## Synefra's Hi-Teach Industrial Park

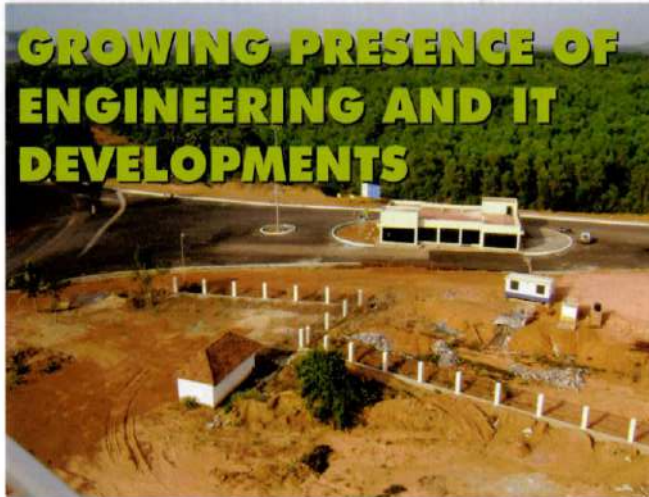
Integrated Infrastructure Solutions' provider Synefra Engineering & Construction Ltd announced the launch of its fully functional Special Economic Zone at Vadodara which is expected to be an eco-consciously developed one stop industrial solution. The Vadodara SEZ has an approximate area of 390 acres and will cater to a range of industries including auto ancillaries, light engineering, IT and ITES, logistics warehousing, gems and jewellery, food processing, biotechnology, textiles and other environment friendly industries.

This is the only SEZ in India with uninterrupted operational gas supply, 20mt wide expandable internal roads and drains, reliable power supply 66 / 33 KV substation, dedicated water supply from Sardar Sarovar Narmada Nigam, extensive water management systems like rain water harvesting and ground water re-charging, advanced waste management systems, hi-tech IT infrastructure and hi-speed telecommunication connectivity and landscapes and green areas among other amenities.



**BUILDOTECH**

October 10



## GROWING PRESENCE OF ENGINEERING AND IT DEVELOPMENTS

The project Synefra SEZ Mangalore is one the fastest commissioned SEZs of India. C&A shares the details Category-SEZ development

With a view to overcome the shortcomings experienced on account of the multiplicity of controls and clearances; absence of world-class infrastructure and an unstable fiscal regime, with a view to attract larger foreign investments in India. This policy is intended to make SEZs an engine for economic growth supported by quality infrastructure complemented by an attractive fiscal package.

### The project:

The Mangalore SEZ is developed on ready to construct land with different plot size options. More than 20 percent of land is leased out already with an investment of over US\$ 125 million. This SEZ was set up with proper thought of its proximity to the port, which could facilitate loading



and unloading of goods. Mangalore also has a growing presence of engineering and IT developments. The features of this SEZ have been carefully considered to mirror those of other leading industrial developments across the world to provide world class infrastructural facilities as well as the advantage of strategic location.

### The features:

The SEZ enjoys state of the art facilities like developed, ready to construct land, systematic network of 20 mt wide internal roads and drains, reliable power supply – 110/11 Kv substation from M/s Karnataka Power Transmission Corporation Ltd, Nandikur. It has extensive water management system with ultra modern harvesting and good ground water re-



charging and advanced waste management system.

### Challenges:

There were a number of challenges faced by while developing this SEZ. To begin with Synefra as a developer would provide the backbone infrastructure for development i.e water, electricity, rain water management, etc. The prime task of the team was site development of SEZ, which was just one part of the works and site grading work. The entire land was an undulated terrain. To ensure proper leveling would mean excavating thousands of cubic mts of earth. The difference between minimum and maximum levels was about 40 mts. To arrive at the best option and solution the team worked out different options based on area programme for developments, suitability of land use and optimal usage. Central road spine was constructed to connect various road levels. The road network was designed with a maximum gradient of 1:10. The other challenge was minimal frontage to access roads. Since the area receives intense rainfall the climatic conditions were also an important aspect to be considered. So rain water harvesting system was envisaged as a solution. It was necessary to ensure that the unit holders had a smooth transition in the SEZ, had all their utilities in place and at the same time parallelly work on the development of the balance land.

### Engineering management:

The company faced problems such as taking care of the utilities like water, power, gas, etc for the unit holders. It also had issues with setting up of substation in the area due to uneven land. It went out of its way to get an extended power line from the govt. substation (approx 4 kms away from the SEZ) to ensure proper supply to unit holders.

### Key highlights:

The most important USP of this SEZ is its proximity to the port (approx 25 kms from site) for exports and imports. Facility for a captive jetty exclusive for the SEZ unit holder, enabling easy loading and unloading of goods. ■